

110042 Puregiene Stainless Steel Jumbo Roll Dispenser

REFILL RE-ORDER CODES

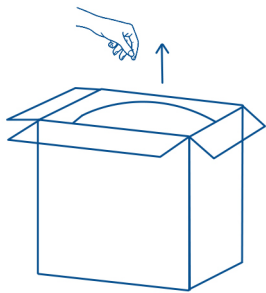
100160 - Puregiene Superior
1 Ply 600m Jumbo Roll (Ctn 8)

100134 - Puregiene Superior
2 Ply 300m Jumbo Roll (Ctn 8)

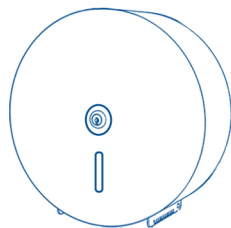
Simply visit puregiene.com.au to find a distributor!

Product

Take out the product

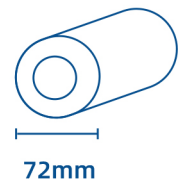
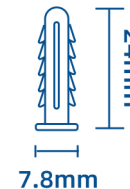
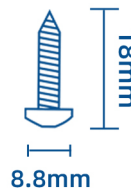
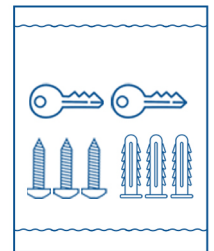


Confirm the product and accessory pack



Accessories list

- Key x2
- Mounting Screw x3
- Plastic Anchor x3

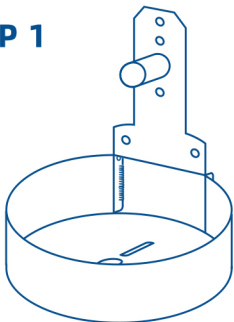


The standard inner spindle is 40mm.

The 72mm inner spindle accessory has been installed during production.

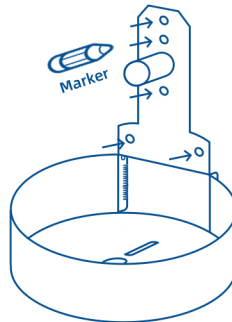
Installation Steps

STEP 1



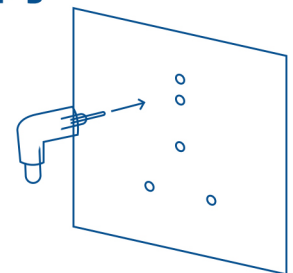
Open the dispenser with the key provided.

STEP 2



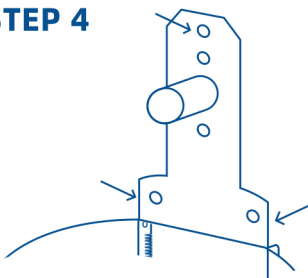
Hold the opened dispenser on the wall and mark the screw holes with color marker. Remove the dispenser after marking..

STEP 3



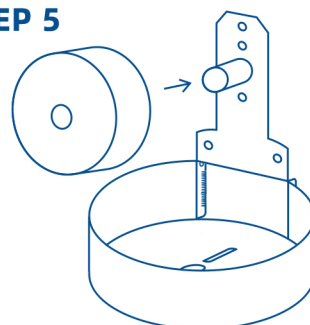
Drill the holes and insert the plastic anchor.

STEP 4



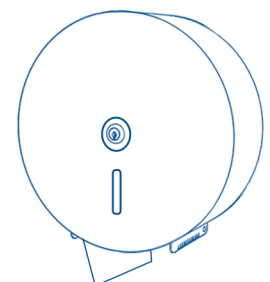
Secure the dispenser on the wall with the screws. Recommend to screw the top and bottom two holes. For more security or softer walls, please add additional screws to the extra two holes.

STEP 5



Install Puregiene 100160/100134 Jumbo roll refill

STEP 6



Close the top cover and lock it with the key.